

## TECHNICAL SPECIFICATIONS

### GENERAL INFORMATION

Build volume	x 1500 y 1000 z 1000 (mm)
Print speed	Up to 600 (mm/s)
Layer height	Between 0.5 - 4.0 (mm)
Highest movement speed	750 (mm/s)
Printing method	Fused Granular Fabrication (FGF)
Accuracy of linear modules	0.001 (mm)
Accuracy of material flow	Material specific
Max weight of printed item	250 (kg)
Dimensions of printer	x 2400 y 1800 z 2500 (mm)

### EXTRUDER OPTIONS

	Small	Medium	
Nozzle size	1.0-2.0	2.0-8.0	(mm)
Material output	Up to 1.0	14.0	(kg/h)
Number of extruders	Up to 2	2	(pcs)

### MATERIAL OPTIONS

Approved Materials	Standard Grade	Special Grade (Additives)
	ABS	PP with glass fibers
	PLA	PP with glass balls
	Nylon	ABS with wood fibers
		ABS with carbon fibers
		PE
		PLA with wood fibers
		PLA with copper powder
		TPU
		TPE

Other Materials

All thermoplastics can be tested

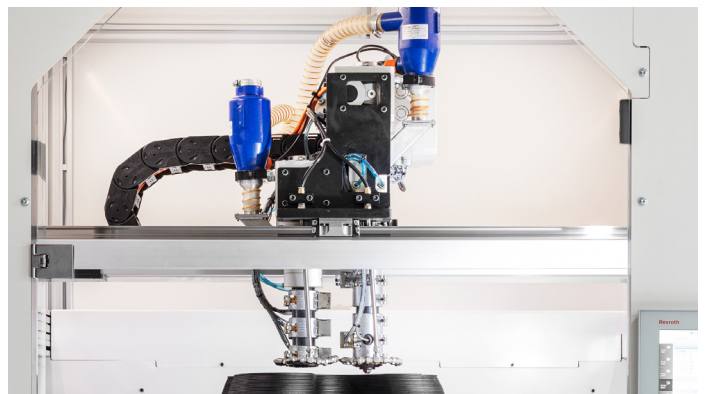
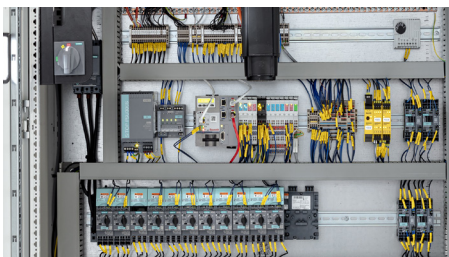


# THE BOX

## SMALL

THE BOX Small is a standard machine with a build area of 1500 mm x 1000 mm and a layer height of 1000 mm. It can be supplied with up to two extruder nozzles of small or medium size. All BLB machines use the FGF (Fused Granular Fabrication) method with industry-standard granules. Granules reduce material costs and allow a wider choice of materials.

THE BOX Small can be used for prototype manufacture as well as full-scale mass production.



**middle east**  
3D PRINTING THE FUTURE

U.A.E Office : 3204, Prism Tower, Business Bay, P.O. Box 28820, Dubai, U.A.E.  
K.S.A Office : Al Saif Tower, 6th Floor, King Abdullah Street, Near Intersection with Olaya Street, Riyadh, K.S.A.  
Tel : +971.4.443.3853 ; Fax : +971.4.443.3938 ; Email : [info@3d-me.com](mailto:info@3d-me.com) ; Website: [www.3d-me.com](http://www.3d-me.com)